

Advantage Series

Full Face & Half Masks



MSA's expertise in breathing protection is very evident in its range of full face masks and half masks. Comfort and quality, useful accessories and an unbelievable range of filters meet every challenge.

The Advantage Series can be used with filters and powered air-purifying devices and features a full range of products that meet the toughest users expectations in terms of reliability, safety and comfort. The full face and half masks have been designed based on strong Voice of Customers analysis and have reached the highest level in terms of ease of use and ease of maintenance.

WE KNOW WHAT'S AT STAKE.



Donning



Put your chin into the chin cup



Pull the harness over your head



Tighten the two lower straps

The full face mask series Advantage 3000 provides both protection and unparalleled comfort. The soft sealing line made of hypo allergenic silicone provides a pressure-free fit. The large, optically corrected lens ensures a clear, undistorted view, while the grey-blue colour gives the mask an aesthetic appearance.

In order to meet all requirements concerning respiratory protective equipment, the Advantage 3000 comes in two versions, each in three different sizes. Choose between Advantage 3200 with bayonet connection and Advantage 3100 with EN 148 standard thread filter connection.

Donning the Advantage 3000 is unbelievably quick, simple and accomplished without painful hair pulling. The patented Advantage head harness gives a perfect face piece-to-face fit.

| | Features | Benefits |
|---------------------------------|--|---|
| Excellent wearer comfort | • Innovative Advantage harness | • Simplified donning and doffing; no painful friction with hair |
| | • Soft and large sealing line made of hypo allergenic silicone | • Pressure-free and safe fit |
| Optimal protection | • Available in 3 sizes | • Perfect adaptation to different face shapes |
| | • Panoramic view lens | • Undisturbed field of view |
| Cost effectiveness | • Quick (dis)assembly | • Easy cleaning |
| | • One design – two versions (twin and single connection) | • Reduced test and training costs |
| | • Bayonet filters also suitable for Advantage 420 and 200 LS | • Rationalisation of stocks |



Facepiece-to face Anthrocurve



Advantage 200 LS half mask

The Advantage 200 LS is a comfortable, efficient and economic half mask. It is ideal for applications where workers are exposed to various hazards from job to job, such as high concentrations of fumes, mists and gases.

With its patented MultiFlex system the Advantage 200 LS offers maximum protection and high wearing comfort. The soft, pliable combination of rubber and plastic provides a customised and pressure-free fit, instantly conforming to the wearer's unique facial characteristics.

The Advantage 200 LS comes in three sizes and has a complete and exclusive filter programme to protect against harmful particles and/or gases.

| | Features | Benefits |
|---------------------------------|---|---|
| Excellent wearer comfort | <ul style="list-style-type: none"> Well-balanced, low weight design | <ul style="list-style-type: none"> Pressure-free fit |
| Optimal protection | <ul style="list-style-type: none"> MultiFlex (soft sealing line with robust mask body) Anthrocurve pre-formed nosepiece and adjustable head harness | <ul style="list-style-type: none"> Excellent face-piece-to-face fit Perfect adaptation to different face shapes |
| Cost effectiveness | <ul style="list-style-type: none"> Low maintenance design Wide range of filters Bayonet filters also suitable for Advantage 3200 and 420 | <ul style="list-style-type: none"> Easy to clean Serves various applications Rationalisation of stocks |

Advantage 400 Series



The innovative Advantage 400 half mask stands out due to exceptional comfort and sophisticated design.

The patented single loop head harness is unique to the market. It grants the user an intuitional operation and offers high comfort and flexibility. The drop-down option allows the user to remove the mask from the face without removing his other safety equipment (like helmet, ear muffs or spectacles). The respirator can be worn along the chest until the next use. Lock-down permits to set the harness to the proper fit. It can be then reused without any further adjustments.

The one-piece MultiFlex nose cup is made of soft and smooth co-molded silicone and rigid plastic. This unique combination gives the face piece great durability and extraordinary stability when worn, without compromising comfort.

The Advantage 400 is either available with single thread EN 148-1 connection (Advantage 410) or with twin bayonet MSA connection (Advantage 420). For both versions MSA offers a wide range of different filters, suitable for all applications.



Donning



Place cradle on head



Pull down front straps and lock lever



Close neck buckles and pull on both straps evenly

| | Features | Benefits |
|---------------------------|--|--|
| Simplicity | • Unique harness assembly | • Makes for easier donning and doffing |
| | • Drop-down mode | • Allows the user to remove respirator and carry it safely along the chest while wearing head protection |
| | • Lock-down mode | • Provides the user with the option of fixed sizing (mask can be reused without further adjustments) |
| | • Innovative lever | • Enables a quick and easy switch between lock-down and drop-down mode |
| Comfort | • Flat single loop harness | • Eliminates pressure points on head when head protection is used |
| | • Multi-ethnic face seal | • Adapts to a broad range of faces globally |
| | • Wide straps | • Minimises twisting and cutting in the nape |
| | • Chin cup with built-in drain hole | • Reduces slippage of face piece in hot humid conditions |
| Safety | • One-piece nose cup made of soft over-molded silicone and rigid plastic | • Offers excellent stability on the user's face and eliminates multiple leak points |
| | • Textured inner seal of face piece | • Maintains good face piece fit |
| | • No loose or dangling straps | • Provides greater visibility |
| | • Downwards pointing exhalation valve | • Avoids projection of exhaled humid air and reduces fogging on face shield lens |
| Flexibility | • Low profile design | • Integrates extremely well with other PPE |
| | • Adjustable cradle and 3 face piece sizes | • Provides perfect adaptation to different head sizes and facial contours |
| | • Drop-down and non-drop-down option | • Allows customization of the mask |
| | • Single (410) and twin (420) filter variant | • Offers the possibility of choosing a model according to individual preferences |
| Cost effectiveness | • Only 3 major components | • Makes cleaning and maintenance much easier |
| | • High quality silicone | • Offers great durability |
| | • Uses existing MSA filters | • Minimises inventory |
| | • Two versions – one design (twin and single connection) | • Reduces test and training costs |

Suitable for:

High heat environments

- Steel mills
- Foundries
- Hot-houses
- Coke ovens
- Bagging operations

Welding

- Hex chrome
- Carbon steel
- Brazing
- Soldering
- Metal pouring

Petrochemical exposure

- Chemical manufacturing
- Dipping / coating operations
- Sampling

Extreme cold conditions

- Drilling rigs
- Construction
- Rail road repair
- Northern climates

Painting

- Bridge repair
- Construction painting
- Coatings
- Chemical overlays

Respiratory Filters

Advantage Filters

The Advantage filter line is a complete line of particulate, chemical and combination cartridges, providing the best in light-weight and high-performance filters.

Crafted for easy installation and strong protection, Advantage respirator cartridges use a bayonet-style design for easy mounting. With low-lug height and lead-in connectors, the cartridges lock into place with only a single twist.

The Advantage filter lines are for use with Advantage 3200, Advantage 200 LS and Advantage 420.



Advantage 3200 with Advantage chemical cartridges

Standard Thread Filters

The greatest experience and know-how, as well as one of the widest ranges in the market make MSA filters the first choice for users in all industries.

The high-performance particle filter P3 PlexTec and all combination filters are using MSA's PlexTec filter media. The significantly increased filtering surface reduces breathing resistance and results in slightly more relaxed breathing as well as more compact filter housings.

The MSA 9X Series of Gas and Combination filters is in full compliance with the REACH regulation and does not include any toxic materials listed in the European Regulation.

The Standard Thread Filters can be used with Advantage 3100 and Advantage 410.

For detailed information on standard thread filters please see leaflet 05-100.2.



Advantage 410 with P3 PlexTec filter



Advantage 200
Particle Filter P3



Advantage 201
Chemical Filter A2B2E1



Advantage 202
Combination Filter
A2B2E1 P3



Advantage P3



Advantage ABEK



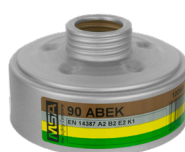
Advantage ABEK-P3



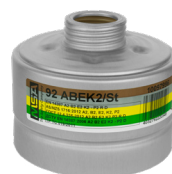
Advantage Prefilter P2R



PlexTec Particle Filter P3



Gas Filter 90 ABEK



Combination Filter
92 ABEK2



Combination Filter
93 ABEK2-Hg/St



Pre-Filter for Filter
Cartridge

Ordering Information

| Part Number | Description |
|--|--|
| Respiratory Filters | |
| Advantage 200 Filters: EN 143, EN 14387 | |
| 430375 | P3 R High efficiency Dust Cartridge (pair) |
| 430371 | A2 Chemical Cartridge (pair) |
| 10144827 | A2B2E1 Chemical Cartridge (pair) |
| 430373 | A2B2E1K1 Chemical Cartridge (pair) |
| 430372 | A2P3 R Combination Cartridge (pair) |
| 10144828 | A2B2E1P3 R Combination Cartridge (pair) |
| 430374 | A2B2E1K1P3 R Combination Cartridge (pair) |
| 10011347 | P2 R prefilters (10 pairs) and 2 adapters |
| Standard Thread Filters: EN 143, EN 14387 | |
| 10094376 | Particle Filter P3 PlexTec (pack of 10) |
| 10114676 | Particle Filter P3 PlexTec (pack of 100) |
| 10115187 | Gas Filter 90 A |
| 10098113 | Gas Filter 90 AB |
| 10098114 | Gas Filter 90 ABEK |
| 10098112 | Gas Filter 90 ABEK2 |
| 10108408 | Gas Filter 90 AX |
| 10115320 | Gas Filter 90 K |
| 10115188 | Combined Filter 92 A/St P2 |
| 10097995 | Combined Filter 92 ABEK/St P2 |
| 10097996 | Combined Filter 92 ABEK2/St P2 |
| 10115189 | Combined Filter 93 A/St P3 |
| 10097993 | Combined Filter 93 AB/St P3 |
| 10097231 | Combined Filter 93 ABEK Hg/St P3 |
| 10097232 | Combined Filter 93 ABEK2 Hg/St P3 |
| 10108409 | Combined Filter 93 AX/St P3 |
| 10115190 | Combined Filter 93 K/St P3 |
| 10115315 | Combined Filter ABEK CO NO Hg/St P3 |
| 10115314 | Combined Filter CO NO/St P3 |

R = Reusable according to EN143:2000/A1:2006

OR = Odor removal

Note: Filter weight limit for Advantage 410 = 300 g



Pouch for Advantage 200 LS

| Part Number | Description |
|--|-------------------|
| Full Face Masks | |
| Advantage 3100, EN 136 with single thread EN 148-1 connection | |
| 10027724 | Advantage 3111, S |
| 10027723 | Advantage 3121, M |
| 10027725 | Advantage 3131, L |
| 10042664 | Advantage 3112, S |
| 10042730 | Advantage 3122, M |
| 10042731 | Advantage 3132, L |
| Advantage 3200, EN 136 with twin bayonet MSA connection | |
| 10027727 | Advantage 3211, S |
| 10027726 | Advantage 3221, M |
| 10027728 | Advantage 3231, L |
| 10042732 | Advantage 3212, S |
| 10042733 | Advantage 3222, M |
| 10042734 | Advantage 3232, L |

The selection of an Advantage 3000 is easier when using its four-digit version number.

- 1) 3 = product line 3000
- 2) 1 or 2 = EN thread or bayonet connection
- 3) 1 or 2 or 3 = small or medium or large
- 4) 1 or 2 = Advantage harness or Advantage harness with silicone strap

| Part Number | Description |
|---|-----------------------|
| Half Masks | |
| Advantage 410, EN 140 with single thread EN 148-1 connection | |
| 10102276 | Advantage 410, small |
| 10102277 | Advantage 410, medium |
| 10102278 | Advantage 410, large |
| Advantage 420, EN 140 with twin bayonet MSA connection | |
| 10102273 | Advantage 420, small |
| 10102274 | Advantage 420, medium |
| 10102275 | Advantage 420, large |

The weight of a single filter shall not exceed 300 g when used with the Advantage 410

| Advantage 200 LS, EN 140 | |
|---------------------------------|--------------------------|
| 430357 | Advantage 200 LS, small |
| 430356 | Advantage 200 LS, medium |
| 430358 | Advantage 200 LS, large |

| Part Number | Description |
|--------------------|--|
| Accessories | |
| 10016038 | Pouch for Advantage 200 LS |
| 10017835 | Adapters Advantage (for leak test) |
| 10032100 | Carrying Strap |
| 10037238 | Cover lens, clear (10 pcs) |
| 10037282 | Spectacles kit |
| 10042663 | Advantage harness with silicone straps |

MSA – The Safety Company

Our business is safety. We've been the world's leading manufacturer of high-quality safety products since 1914. MSA products may be simple to use and maintain, but they're also highly-sophisticated devices and protective gear – the result of countless R&D hours, relentless testing and an unwavering commitment to quality that saves lives and protects thousands of men and women each and every day. Many of our most popular products integrate multiple combinations of electronics, mechanical systems and advanced materials to help ensure that users around the world remain protected in even the most hazardous of situations.

Our Mission

MSA's mission is to see to it that men and women may work in safety and that they, their families and their communities may live in health throughout the world.

MSA: We Know What's at Stake.

Note: This Bulletin contains only a general description of the products shown. While product uses and performance capabilities are generally described, the products shall not, under any circumstances, be used by untrained or unqualified individuals. The products shall not be used until the product instructions/user manual, which contains detailed information concerning the proper use and care of the products, including any warnings or cautions, have been thoroughly read and understood. Specifications are subject to change without prior notice.

MSA operates in over 40 countries worldwide. To find an MSA office near you, please visit ***MSAsafety.com/offices.***